

# 使用者手冊

穿戴式攝影機

## DrivePro™ Body 20

(Version 1.0)



# 目錄

1. 產品介紹.....	2
2. 系統需求.....	3
3. 使用說明.....	4
3-1 功能鍵.....	4
3-2 充電說明 .....	5
3-3 LED 指示燈.....	5
4. 錄影功能 .....	6
4-1 普通錄影 .....	6
4-2 緊急錄影 .....	7
5. 照相功能 .....	7
6. 專屬 DrivePro™ Body App .....	8
6-1 下載與安裝 App .....	8
6-2 連線 DrivePro™ Body App.....	8
6-3 播放影片及瀏覽照片 .....	10
6-4 裝置設定 .....	11
7. 使用 DrivePro™ Body Toolbox 軟體.....	12
7-1 狀態 .....	13
7-2 設定 .....	14
7-3 工具 .....	15
7-4 檔案管理員.....	16
7-5 偏好 .....	17
8. 多功能底座(另購).....	18
9. 注意事項.....	19
10. IPX4 防潑水等級 .....	19
11. 包裝內容.....	21
12. 產品規格.....	23
13. 常見問題.....	24
14. 回收和環保 .....	25
15. 兩年有限保固條款 .....	26
16. GNU 通用公共授權條款 (GPL) 公告 .....	27
17. 使用者授權合約 (EULA) .....	27
18. 美國聯邦通信委員會 (FCC)聲明 .....	30

## 1. 產品介紹

感謝您購買創見DrivePro™ Body 20隨身攝影機，DrivePro™ Body 20是一台操作簡單的穿戴式攝影機，可即時記錄事件的發生，專為警察及保全或其他相關專職人員而設計。內建Wi-Fi功能，可透過免費下載的DrivePro™ Body app，在Apple iOS或Android行動裝置上進行影片即時預覽與基本操作設定。

DrivePro™ Body 20提供360度旋轉背夾或魔鬼氈背夾，方便使用者穿戴在制服或外套上。DrivePro™ Body 20使用160度廣角鏡頭、F2.8超大光圈搭配1080P高畫質像素，可將重要資訊完整並清楚的記錄，且保證錄影品質及更寬廣的錄影範圍。具備便利的快照按鈕，方便錄影時也能隨時拍照，不怕遺漏任何關鍵時刻；事件發生時，立即按下快照按鈕，拍下第一手證據。DrivePro™ Body 20 內建鋰電池，可在1.5小時內快速充電完畢，最長可連續錄影3.5小時。

DrivePro™ Body 20內建32GB容量，總共可儲存3.5小時左右的高畫質影片。機身堅固且具備IPX4防潑水等級，能加強保護隨身攝影機及其耐用度。搭配專為DrivePro™ Body 20所設計的DrivePro™ Body Toolbox 軟體，透過人性化的操作介面，讓Windows作業系統的使用者能自行調整DrivePro™ Body 20錄影檔案的設定。一般企業部門或公司行號購買多台DrivePro™ Body穿戴式攝影機，可另外選購創見6埠充電傳輸座，能同時支援充電與傳輸檔案。

### 產品特色

- 高解析度 Full HD 1080P，每秒 30 張錄影
- 便捷快照鈕，提供錄影同時拍照功能（200 萬畫素相機鏡頭）
- F2.8 超大光圈搭配度 160 度廣角鏡頭
- 內建 Wi-Fi 連線，即時觀看下載影片連線與可使用專屬 App 設定功能
- 內建 32GB 儲存容量
- 12Mbps 高位元率錄影影像，.MOV 錄影檔案格式
- 符合美國軍規抗震標準及 IPX4 防潑水等級（勿浸水）
- 360 度旋轉背夾或魔鬼氈背夾，以供選擇
- 內建麥克風
- 內建 1530mAh 鋰電池，最長可連續錄影 3.5 小時

## 2. 系統需求

如您的電腦需符合下列系統需求方可連接 DrivePro™ Body 20 隨身攝影機與安裝 DrivePro™ Body Toolbox 軟體：



有 USB 埠的桌上型或筆記型電腦：

- Windows® 7
- Windows® 8
- Windows® 8.1
- Windows® 10
- macOS® 10.14 或更新版本

### 3. 使用說明

#### 3-1 功能鍵



同時按壓  +  兩個按鍵二十秒來格式化並重置裝置。

**請注意！所有資料將被永久刪除。**



## 3-2 充電說明

使用前，請先將電池充滿。充電方式可透過電源變壓器直接充電，或 USB 連接埠連接電腦充電。充電中警告指示燈將持續亮橘燈，充飽電時警告指示燈將會自動熄滅。

您可以選擇以下任一方式進行充電：

1. 將 3.5mm 傳輸線一端連接 DrivePro™ Body 20，一端連接電源變壓器，將電源變壓器插入電源插座充電。
2. 將 3.5mm 傳輸線一端連接 DrivePro™ Body 20，一端連接電腦進行充電。
3. 使用多功能底座進行充電（另購）。



### 警告：

1. DrivePro™ Body 20 僅支援 FAT32 檔案格式。
2. 請勿在其他裝置上使用 3.5mm 至 USB 傳輸線。

## 3-3 LED 指示燈

俯瞰圖



錄影中

LED	狀態	說明
●	閃爍	儲存空間不足
●	閃爍	低電量

連接電腦/電源時

LED	狀態	說明
●	閃爍	傳輸檔案
	持續亮燈	等待備份
●	持續亮燈	充電中




正面圖



LED	狀態	說明
●	閃爍	普通錄影中
	快速閃爍	緊急錄影中
●	閃爍	Wi-Fi 啟動下錄影
	持續亮燈	瀏覽 / 設定

## 4. 錄影功能


### 4-1 普通錄影

請按壓電源鍵  一秒，聽到嗶一聲後開始錄影，錄影中錄影指示燈將持續閃紅燈；按壓電源鍵  一秒，聽到嗶一聲後停止錄影，錄影指示燈將停止閃爍。在錄影時，請按  啟動 Wi-Fi，LED 指示燈會由藍色轉為紅色。在錄影中，DrivePro™ Body 20 每三分鐘將會自動儲存檔案一次。



請注意：點 DrivePro™ App 的瀏覽/設定，即可停止錄影；同時 LED 指示燈會轉成藍色。

## 4-2 緊急錄影

欲開啟緊急錄影，請在錄影當中短按一次  鍵；您將聽到兩次嗶聲（一短一長），同時紅外線 LED 燈會閃爍得比普通錄影時更加快速。檔案錄製完畢後，將自動結束緊急錄影，並回到普通錄影模式（錄製長度將根據設定的錄影時長而定）。緊急錄影的影片檔會存放在「緊急」資料夾裡，並受到保護，無法被覆寫。

## 5. 照相功能

輕按一下快照鈕  可於錄影同時存取照片。聽到一聲嗶聲，表示拍照成功。



## **6. 專屬 DrivePro™ Body App**

DrivePro™ Body App 專為 iOS 與 Android 行動裝置所設計，可在行動裝置上進行影片即時預覽與基本操作設定。

### **6-1 下載與安裝 App**

1. 在 App Store 或 Google Play 上輸入搜尋 DrivePro Body。

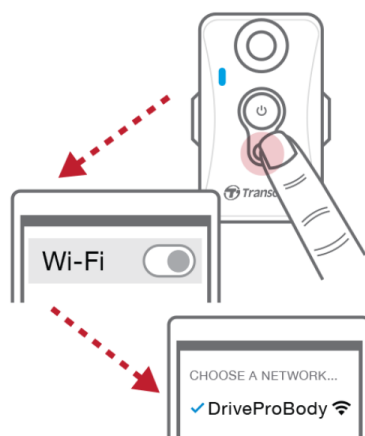
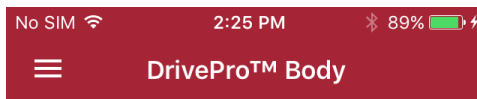


2. 下載 DrivePro Body App 至您的行動裝置，並進行安裝。

當完成安裝後，應用程式將會顯示在裝置的主螢幕上。開始使用 App 前，請先參閱 DrivePro™ App 使用指南。

### **6-2 連線 DrivePro™ Body App**

1. 錄影時長按  鍵來啟動 Wi-Fi 功能。當 Wi-Fi 連線時，LED 指示燈會閃爍藍色。點選行動裝置上的 DrivePro™ Body App。
2. 按**連接至裝置**，請靜候可連線的網路名稱開啟。



Please make sure the connection is available

Connect

3. 選擇 “DrivePro™Body20” (預設密碼為 12345678)。



4. 點選行動裝置上的 DrivePro Body App。




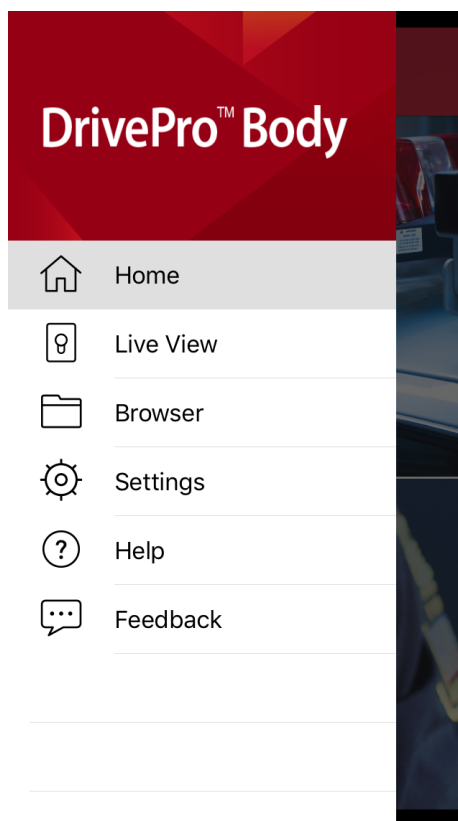
請注意：點 DrivePro™ App 的瀏覽  / 設定  鍵，即可停止錄影；同時 LED 指示燈會轉成藍色。

回復錄影，請按  首頁 或  即時瀏覽。

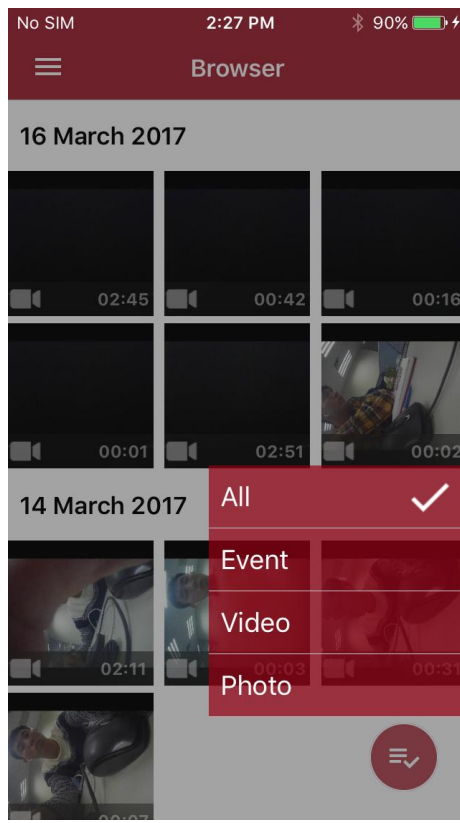
## 6-3 播放影片及瀏覽照片

### iOS/安卓系統


1. 預播放影片或瀏覽相片，請按  瀏覽器。




2. 選擇欲撥放影片檔或照片檔。



## 6-4 裝置設定

按  進入裝置設定選單，使用者可自行調整影片、裝置、**Wi-Fi** 與系統設定。


### 主選單

 **解析度**：設定錄影影像解析度。


選項：FHD / 720P

 **影片長度**：設定每支影片的長度。


選項：3 分鐘 / 5 分鐘 / 10 分鐘

 **循環錄影**：用影片檔覆蓋掉舊影片檔。

選項：開啟 / 關閉

 **影片標記**：顯示影像錄製時間與影片標籤。

選項：開啟 / 關閉

 **影片標籤**：點選可自行設定影片標籤（預設為 Transcend DPB20）



麥克風：開啟/關閉麥克風

選項：開啟 / 關閉



日期格式：設定目前日期格式

選項：YY/MM/DD、MM/DD/YY 或 DD/MM/YY



時間格式：設定 24 小時制或 12 小時制。

選項：開啟 (24 小時制) / 關閉 (12 小時制)



光源頻率：選擇適當的頻率，以消除因 A/C 而產生的閃爍。

選項：50Hz / 60Hz



SSID：輸入 SSID 可無線連線到 DrivePro™ Body 20 (預設 SSID 為 DrivePro™ Body20)。

請注意：變更 SSID 後，重新連上 Wi-Fi 也會自動更新。



密碼：設定 DrivePro™ Body 20 連線密碼 (預設密碼為 12345678)。

請注意：變更 SSID 後，重新連上 Wi-Fi 也會自動更新。



韌體版本：點擊更新韌體至最新版本。

**警告：**韌體升級過程中，請勿拔除電源線。



1. 韌體升級過程中，DrivePro™ Body 將會自動關機，LED 指示燈會閃爍紅燈；韌體升級完成後，DrivePro™ Body 會自動重新開機。
2. 在韌體升級過程中無法開啟 DrivePro™ Body，請聯絡創見客服中心或技術支援部分。

## 7. 使用 DrivePro™ Body Toolbox 軟體

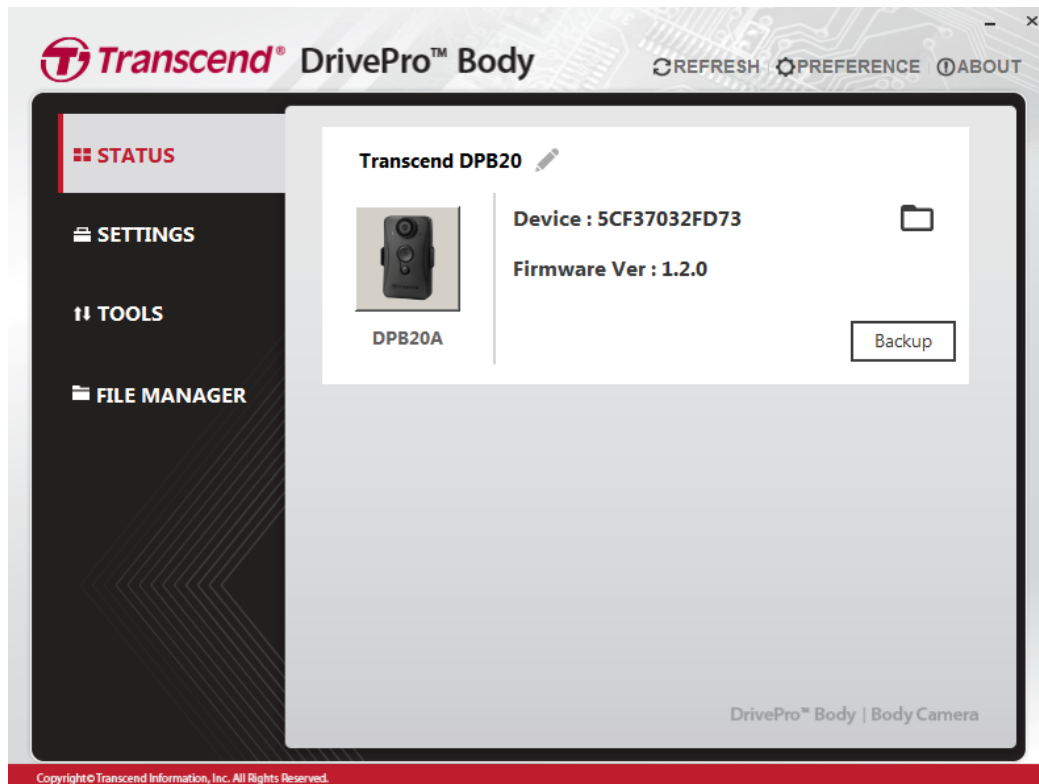
DrivePro™ Body Toolbox 是一套專門為 DrivePro™ Body 20 所設計的軟體，擁有簡易人性化的操作介面，讓 Windows 作業系統的使用者可快速設定 DrivePro™ Body 20 的基本功能。


DrivePro™ Body Toolbox 專為 DrivePro™ Body 20P 提供安全加密功能，保護錄影檔案不外洩。建議第一次使用時建議變更密碼，預設密碼為“12345678”。


1. DrivePro™ Body Toolbox 下載網址：<http://tw.transcend-info.com/downloads>
2. 將 DrivePro™ Body Toolbox 安裝到桌上型電腦或筆記型電腦

## 7-1 狀態

在狀態頁面裡會顯示 DrivePro™ Body 的裝置資訊，包含序號、韌體資訊、使用者標籤與產品型號。



欲變更使用者標籤，請按 。

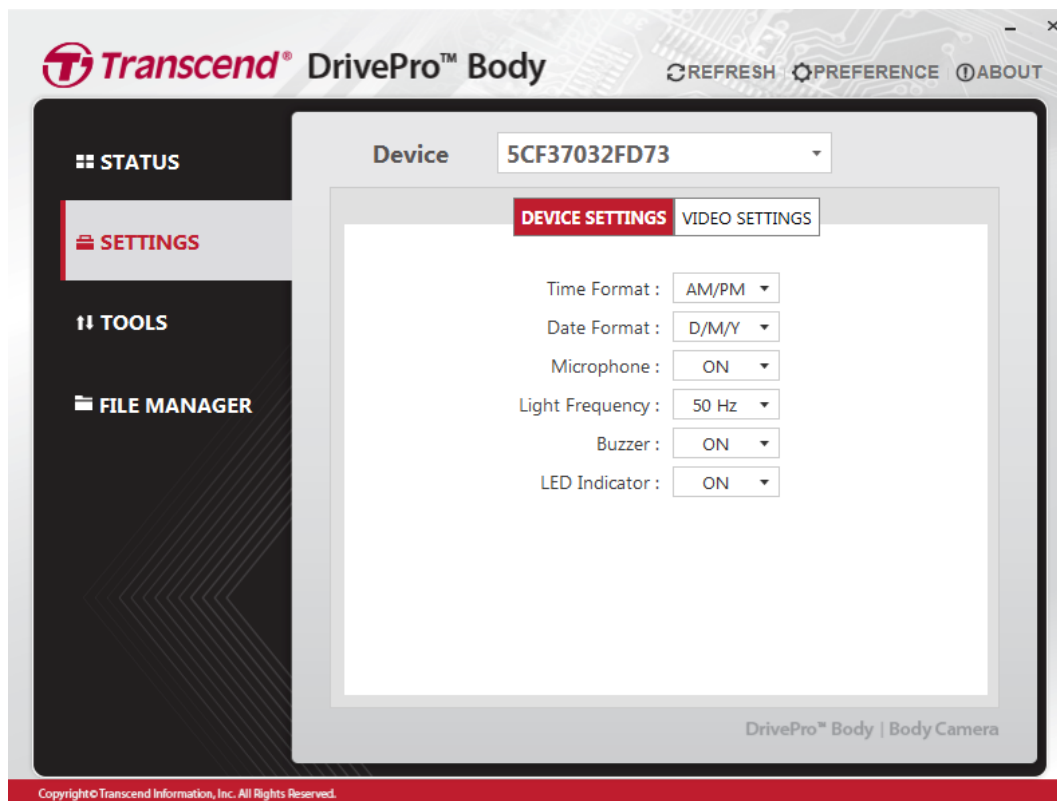
欲開始備份，請按 。

欲播放影片或瀏覽照片，請按 。如使用 DrivePro™ 20P，請先按 ，再輸入密碼解鎖。

## 7-2 設定

在設定頁面裡，使用者可調整裝置與影片設定及更改密碼（僅支援 DrivePro™ Body 20P）。

### 裝置設定



**時間格式：**設定 24 小時制或 12 小時制。

選項：24HR / AM/PM 選項： 24 小時制) / AM / PM

**日期格式：**設定目前日期格式

選項：YY/MM/DD、MM/DD/YY 或 DD/MM/YY

**麥克風：**開啟/關閉麥克風

選項： 開 / 關

**光源頻率：**選擇適當的頻率，以消除因 A/C 而產生的閃爍。

選項： 50Hz / 60Hz

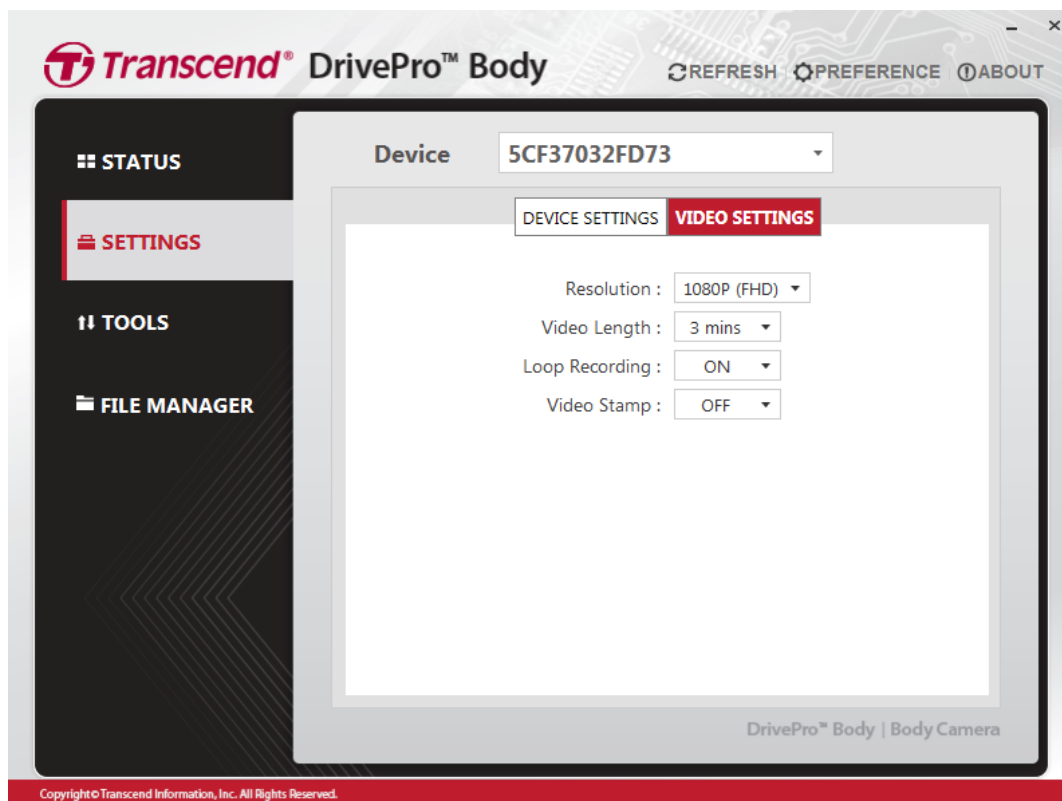
**蜂鳴器：** 選擇開啟/關閉蜂鳴器。

選項： 開 / 關

**LED 指示燈：** 選擇開啟/關閉紅外線 LED 燈。

選項： 開 / 關

## 影片設定



**解析度：** 設定錄影影像解析度。

**選項：** FHD / 720P

**影片長度：** 設定每支影片的長度。

**選項：** 3 分鐘 / 5 分鐘 / 10 分鐘

**循環錄影：** 用影片檔覆蓋掉舊影片檔。

**選項：** 開 / 關

**影片標記：** 顯示影像錄製時間與影片標籤。

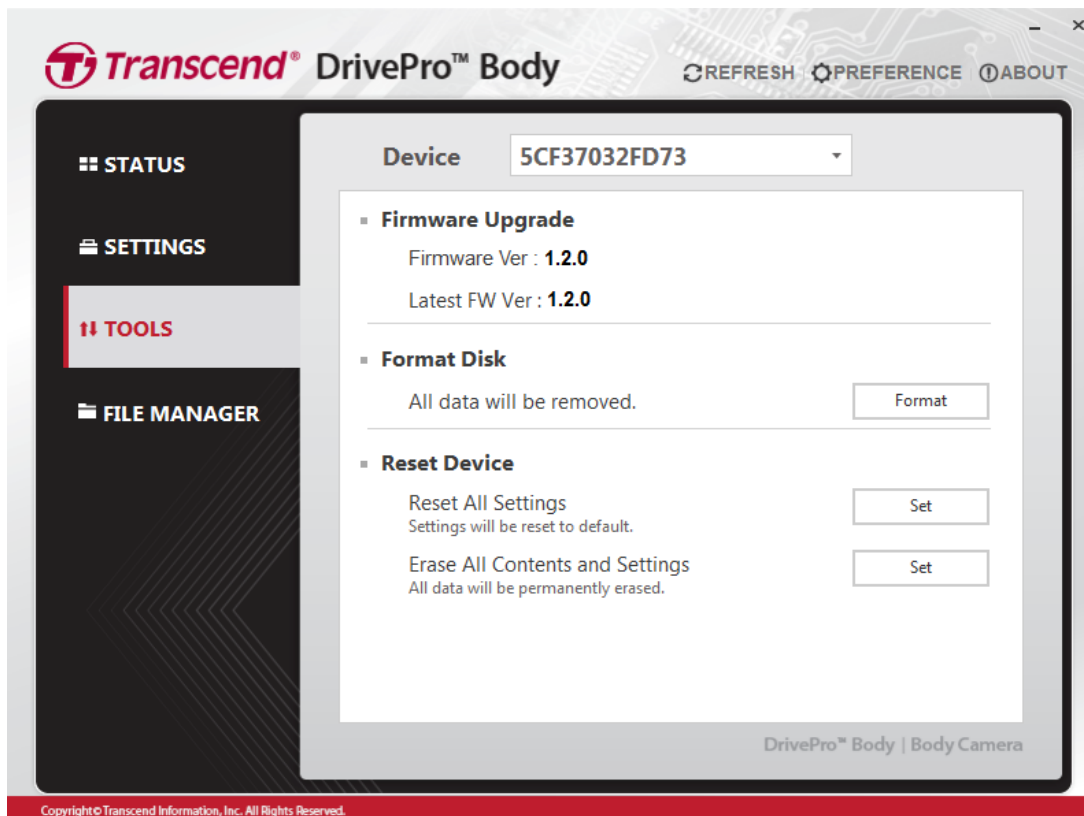
**選項：** 開 / 關

### **變更密碼 (僅支援 DrivePro™ Body 20P)**

預設密碼為 12345678。

## 7-3 工具

在設定頁面裡，使用者可更新韌體至最新版本、磁碟格式化與重置裝置。



**請注意：磁碟格式化與重置裝置會移除資料。**

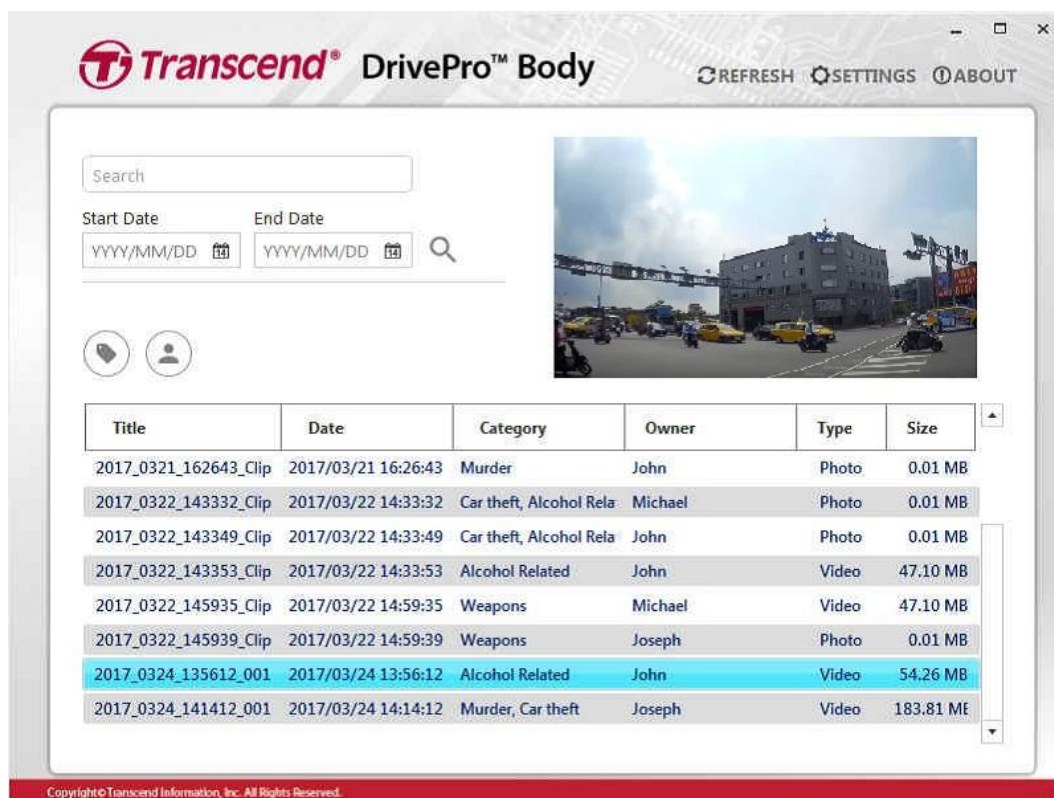
**韌體升級：**更新您的韌體至最新版本。

**磁碟格式化：**格式化您的磁碟。

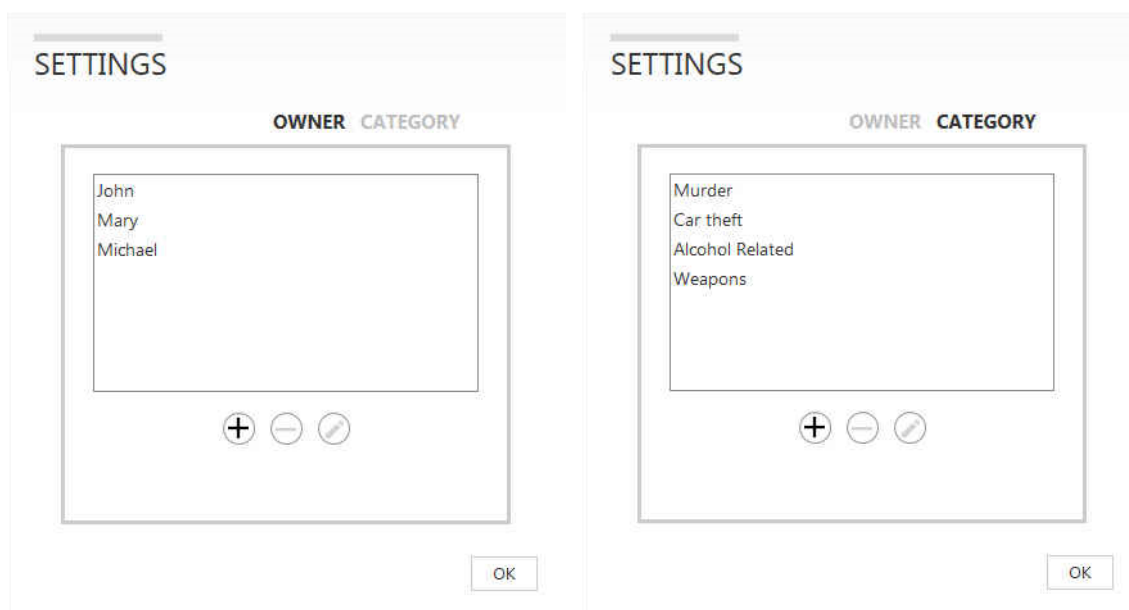
**重置裝置：**重設至出廠設定或清除所有內容及設定。

## 7-4 檔案管理員

於檔案管理員頁面，使用者可以搜尋及管理影片及照片檔，或是編輯照片。



點選頁面上方的 設定，來新增、刪除、編輯管理員或檔案分類。



## 7-5 偏好

點選頁面上方的 偏好，來調整 DrivePro™ Body Toolbox 的設定。

根據不同偏好設定，查看下方的可用選項。



## 8. 多功能底座(另購)

創見多功能底座特別針對 DrivePro™ Body 系列穿戴式攝影機所設計，每台具備 6 個充電埠，一次可串接 3 台底座，提供最多 18 台 DrivePro™ Body 20 或 DrivePro™ Body 20P 同時充電。此外，多功能底座具備自動備份的功能，只需將 DrivePro™ Body 插入充電埠，既可充電又可備份，不僅方便，也替勤務繁忙的警務人員省下不少時間。



## 9. 注意事項

■ 請勿將 DrivePro™ Body 20 隨身攝影機使用或存放在以下地方，以免造成故障或損壞：

- 暴露於過熱（長時間曝曬於太陽底下的車內）、過冷或過於潮濕的環境中
- 直接曝曬於陽光底下或太靠近暖爐
- 處於強磁場環境中
- 暴露於沙塵中

■ 請時常清潔並謹慎保護 DrivePro™ Body 20 的鏡頭

- 當以下情況發生時，請使用軟布擦拭鏡頭表面：
  - 鏡頭表面沾有指紋
  - 鏡頭暴露在空氣較濕黏的環境下（如：海邊）
- 放置於沙塵少的通風處
- 定時清潔保養鏡頭，避免發霉

■ 清潔

請先使用稍微沾濕之軟布清潔 DrivePro™ Body 20 表面後，再使用乾燥軟布擦拭第二遍。請勿使用下列藥劑及物品清潔隨身攝影機，以免損害外殼或導致掉漆：

- 化學產品，例如：稀釋劑、揮發油、酒精、丟棄式抹布、驅蟲劑、防曬乳或殺蟲劑等等。
- 如手指沾有上述化學藥劑時，請勿觸碰隨身攝影機。
- 請勿長時間與橡膠或塑膠接觸。

■ 水氣凝結

如果 DrivePro™ Body 20 從溫度高的環境直接進入溫度較低的環境中（反之亦同），相機外觀或內部零件容易產生水氣，造成相機故障損壞。一旦發現水氣產生，請立即關閉 DrivePro™ Body 20 並等待約一小時，待水氣蒸發後，再開啟使用。

■ 附贈魔鬼氈背夾

- 魔鬼氈背夾建議使用於雨衣、風衣或其他塑膠表面物品；不建議用於棉質、木質或是皮質織品，如需繫掛於此類衣物，建議直接縫合於衣物上。
- 魔鬼氈具備正反兩面，一面黏於附贈的魔鬼氈背夾，另一面黏於穿戴的衣物上。
- 使用方式：使用前請先清潔與保持衣物乾燥。移除背膠後，建議緊黏在衣物 24 小時。

## 10. IPX4 防潑水等級

DrivePro™ Body 20 隨身攝影機機身是 IPX4 防潑水等級（註：等級 4 非完全防水），可防止各個角度潑水浸濕機身，防潑水不包含以加壓水柱直接噴濕，例如蓮蓬頭或水龍頭。



**警告:** DrivePro™ Body 20 連接 USB 線時並不防水。

不當使用所造成的故障或損壞不在有限保固範圍內。

- 請勿將 DrivePro™ Body 20 浸到水裡使用 (註: 等級 4 非完全防水)。
- 請勿在高溫高溼的環境下使用 DrivePro™ Body 20，例如: 三溫暖、蒸氣室、淋浴間。
- 請勿長時間在大雨下使用 DrivePro™ Body 20，避免水氣滲透。

## 11. 包裝內容

- DrivePro™ Body 20



- 電源變壓器



- 3.5mm 轉 USB 傳輸線



- 魔鬼氈

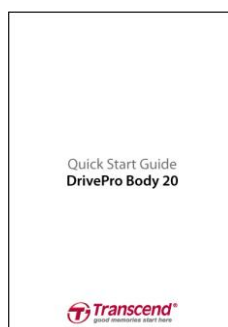


## ■ 固定背夾 & 魔鬼氈背夾

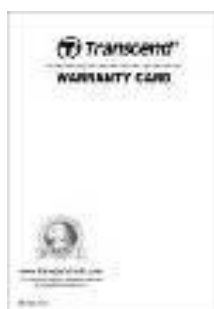


請注意：拆卸背夾時請由背夾兩端施力扳開。組裝時，請確認攝影機有確實卡入背夾中。

## ■ 快速使用手冊



## ■ 保固卡



## 12. 產品規格

傳輸介面	USB 2.0
儲存容量	內建 32GB MLC 儲存容量
尺寸	88.4 公厘(長) × 52.2 公厘(寬) × 19.6 公厘(高)
重量	88g (123g 含固定背夾)
電池	鋰聚合物電池 1530mAh
電源供應	輸入 (最大) : AC 100V-240V, 50-60Hz, 0.4A 輸出 : DC 5V 2A
錄影時間	最長 3.5 小時*
工作溫度	-20°C (-4°F) ~ 65°C (149°F) -20°C (-4°F) ~ 45°C (113°F) 使用電源變壓器充電時
影像格式	H.264 影像壓縮技術 (MOV: 最高 1920x1080 30fps)
防水等級	IPX4 (防潑水)
抗震標準	依據美國 MIL-STD-810G 516.6-Transit Drop Test 軍事規格
鏡頭	F/2.8 , 160°廣角
解析度 / 每秒顯示幀數	Full HD (1920 x 1080) / 30fps
安規認證	CE 、 FCC 、 BSMI
產品保固	2年有限保固

\*實際錄影時間將視當時情況而定。

## 13. 常見問題

若您在使用 DrivePro™ Body 20 時發生任何問題，請先參考以下資訊嘗試排除問題。若您的問題仍然無法解決，請詢問您購買的店家、服務中心或直接與創見資訊聯絡。我們的官網

(<http://www.transcend-info.com/>) 亦提供更多 FAQ 及技術支援服務

([http://www.transcend-info.com/Support/contact\\_form](http://www.transcend-info.com/Support/contact_form))。

### ■ 電腦作業系統無法偵測 DrivePro™ Body 20。

請確認以下事項：

1. 您的DrivePro™ Body 20是否正確的連接在USB埠上？如果不是，請重新插拔，並確認USB埠兩端有正確的連接如使用者手冊所示。
2. 您的DrivePro™ Body 20是否連接在Mac的鍵盤上？如果是，請將DrivePro™ Body 20直接插入Mac主機的USB埠上。
3. 您電腦的USB埠是否已啟動？如果沒有，請參閱您電腦（或主機板）的使用手冊進行啟動。

### ■ DrivePro™ Body 20 的按鈕皆無回應。

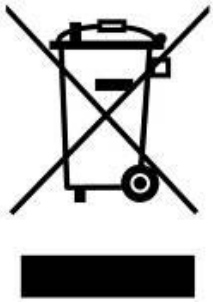
請利用有尖端的細長物（如：拉直的迴紋針）按壓 DrivePro™ Body 20 下方的重置鍵關機後再重新開機。

### ■ DrivePro™ Body 20 是否防水防震？

DrivePro™ Body 20 符合 IPX4 防潑水等級與美國軍規抗震標準\*。

\*本產品使用美國 MIL-STD-810G 516.6-Transit Drop Test 軍事規格為實驗依據。

## 14. 回收和環保



**Recycling the Product (WEEE):** Your product is designed and manufactured with high quality materials and components, which can be recycled and reused. When you see the crossed-out wheel bin symbol attached to a product, it means that the product is covered by the European Directive 2002/96/EC:

Never dispose of your product with other household waste. Please inform yourself about the local rules on the separate collection of electrical and electronic products. The correct disposal of your old product helps prevent potential negative consequences on the environment and human health.



**Battery Disposal:** Your product contains a built-in rechargeable battery covered by the European Directive 2006/66/EC, which cannot be disposed of with normal household waste. Please inform yourself about the local rules on separate collection of batteries. The correct disposal of batteries helps prevent potentially negative consequences on the environment and human health.

For products with non-exchangeable built in batteries: The removal of (or the attempt to remove) the battery invalidates the warranty. This procedure is only to be performed at the end of the product's life.

### **CAUTION**

RISK OF EXPLOSION IF BATTERY IS REPLACED BY AN INCORRECT TYPE.  
DISPOSE OF USED BATTERIES ACCORDING TO THE INSTRUCTIONS.



廢電池請回收

## **15. 兩年有限保固條款**

This product is covered by a Two-year Limited Warranty. Should your product fail under normal use within two years from the original purchase date, Transcend will provide warranty service pursuant to the terms of the Transcend Warranty Policy. Proof of the original purchase date is required for warranty service. Transcend will inspect the product and in its sole discretion repair or replace it with a refurbished product or functional equivalent. Under special circumstances, Transcend may refund or credit the current value of the product at the time the warranty claim is made. The decision made by Transcend shall be final and binding upon you. Transcend may refuse to provide inspection, repair or replacement service for products that are out of warranty, and will charge fees if these services are provided for out-of-warranty products.

### **Limitations**

Any software or digital content included with this product in disc, downloadable, or preloaded form, is not covered under this Warranty. This Warranty does not apply to any Transcend product failure caused by any accident, abuse, mishandling or improper usage (including use contrary to the product description or instructions, outside the scope of the product's intended use, or for tooling or testing purposes), alteration, abnormal mechanical or environmental condition (including prolonged exposure to humidity), acts of nature, improper installation (including connection to incompatible equipment), or problems with electrical power (including undervoltage, overvoltage, or power supply instability). In addition, damage or alteration of warranty, quality or authenticity stickers, and/or product serial or electronic numbers, unauthorized repair or modification, or any physical damage to the product or evidence of opening or tampering with the product casing will also void this Warranty. This Warranty shall not apply to the transferees of Transcend products and/or anyone who stands to profit from this Warranty without Transcend's prior written authorization. This Warranty only applies to the product itself, and excludes integrated LCD panels, rechargeable batteries, and all product accessories (such as card adapters, cables, earphones, power adapters, and remote controls).

### **Transcend Warranty Policy**

Please visit [www.transcend-info.com/warranty](http://www.transcend-info.com/warranty) to view the Transcend Warranty Policy. By using the product, you agree that you accept the terms of the Transcend Warranty Policy, which may be amended from time to time.



***Transcend Information, Inc.***

**[www.transcend-info.com](http://www.transcend-info.com)**

\*The Transcend logo is a registered trademark of Transcend Information, Inc.

\*The specifications mentioned above are subject to change without notice.

\*All logos and marks are trademarks of their respective companies.

## **16. GNU 通用公共授權條款 (GPL) 公告**

Firmware incorporated into this product and/or software used for this product may include third party copyrighted software licensed under the GPL (hereinafter referred to as "GPL Software"). In accordance with the GPL, if applicable: 1) the source code for the GPL Software may be downloaded at no charge or obtained on CD for a nominal charge by calling Customer Support within three years of the date of purchase; 2) you may copy, re-distribute and/or modify the GPL Software under the terms of the GNU General Public License as below or any later version, which may be obtained at <http://www.gnu.org/licenses/gpl.html>; 3) the GPL Software is distributed WITHOUT ANY WARRANTY, without even implied warranty of MERCHANTABILITY or FITNESS FOR A PARTICULAR PURPOSE. The entire risk as to the quality and performance of the GPL Software is with you. Transcend does not provide any support for the GPL software.

## **17. 使用者授權合約 (EULA)**

### **Software license terms and conditions**

1. **Generally.** Transcend Information, Inc. ("Transcend") is willing to grant the following license to install or use the software and/or firmware ("Licensed Software") pursuant to this End-User License Agreement ("Agreement"), whether provided separately or associated with a Transcend product ("Product"), to the original purchaser of the Product upon or with which the Licensed Software was installed or associated as of the time of purchase ("Customer") only if Customer accepts all of the terms and conditions of this Agreement. PLEASE READ THESE TERMS CAREFULLY. USING THE SOFTWARE WILL CONSTITUTE CUSTOMER'S ACCEPTANCE OF THE TERMS AND CONDITIONS OF THIS AGREEMENT. IF YOU DO NOT AGREE TO THE TERMS AND CONDITIONS OF THIS AGREEMENT, DO NOT INSTALL OR USE THE LICENSED SOFTWARE.

2. **License Grant.** Transcend grants to Customer a personal, non-exclusive, non-transferable, non-distributable, non-assignable, non-sublicensable license to install and use the Licensed Software on the Product in accordance with the terms and conditions of this Agreement.

3. **Intellectual Property Rights.** As between Transcend and Customer, the copyright and all other intellectual property rights in the Licensed Software are the property of Transcend or its supplier(s) or licensor(s). Any rights not expressly granted in this License are reserved to Transcend.

4. **License Limitations.** Customer may not, and may not authorize or permit any third party to: (a) use the Licensed Software for any purpose other than in connection with the Product or in a manner inconsistent with the design or documentations of the Licensed Software; (b) license, distribute, lease, rent, lend, transfer,

assign or otherwise dispose of the Licensed Software or use the Licensed Software in any commercial hosted or service bureau environment; (c) reverse engineer, decompile, disassemble or attempt to discover the source code for or any trade secrets related to the Licensed Software, except and only to the extent that such activity is expressly permitted by applicable law notwithstanding this limitation; (d) adapt, modify, alter, translate or create any derivative works of the Licensed Software; (e) remove, alter or obscure any copyright notice or other proprietary rights notice on the Licensed Software or Product; or (f) circumvent or attempt to circumvent any methods employed by Transcend to control access to the components, features or functions of the Product or Licensed Software.

**5. Copying.** Customer may not copy the Licensed Software except that one copy of any separate software component of the Licensed Software may be made to the extent that such copying is necessary for Customer's own backup purposes.

**6. Open Source.** The Licensed Software may contain open source components licensed to Transcend pursuant to the license terms specified as below,

- (a) GNU General Public License (GPL), the terms of which is currently available at <http://www.gnu.org/licenses/gpl.html> ;
- (b) GNU Lesser General Public License (LGPL), the terms of which is currently available at <http://www.gnu.org/copyleft/lesser.html> ; and/or
- (c) Code Project Open License (CPOL), the terms of which is currently available at <http://www.codeproject.com/info/cpol10.aspx>

The above license terms will control solely with respect to the open source components. In the event that this Agreement conflicts with the requirements of the above one or more terms with respect to the use of the corresponding open source components, Customer agrees to be bound by such one or more license terms.

**7. Disclaimer.** TRANSCEND MAKES NO WARRANTY AND REPRESENTATIONS ABOUT THE SUITABILITY, RELIABILITY, AVAILABILITY, TIMELINESS, LACK OF VIRUSES OR OTHER HARMFUL COMPONENTS AND ACCURACY OF THE INFORMATION, LICENSED SOFTWARE, PRODUCTS, SERVICES AND RELATED GRAPHICS CONTAINED WITHIN THE LICENSED SOFTWARE FOR ANY PURPOSE. ALL SUCH INFORMATION, LICENSED SOFTWARE, PRODUCTS, SERVICES AND RELATED GRAPHICS ARE PROVIDED "AS IS" WITHOUT WARRANTY OF ANY KIND. TRANSCEND HEREBY DISCLAIMS ALL WARRANTIES AND CONDITIONS WITH REGARD TO THIS INFORMATION, LICENSED SOFTWARE, PRODUCTS, SERVICES AND RELATED GRAPHICS, INCLUDING ALL IMPLIED WARRANTIES AND CONDITIONS OF MERCHANTABILITY, FITNESS FOR A PARTICULAR PURPOSE, WORKMANLIKE EFFORT, TITLE, AND NON-INFRINGEMENT.

IN NO EVENT SHALL TRANSCEND BE LIABLE FOR ANY DIRECT, INDIRECT, PUNITIVE, INCIDENTAL, SPECIAL, CONSEQUENTIAL DAMAGES OR ANY DAMAGES WHATSOEVER INCLUDING, WITHOUT LIMITATION, DAMAGES FOR LOSS OF USE, DATA OR PROFITS, ARISING OUT OF OR IN ANY WAY

CONNECTION WITH THE USE, PERFORMANCE OR ACCURACY OF THE LICENSED SOFTWARE OR WITH THE DELAY OR INABILITY TO USE THE LICENSED SOFTWARE, OR THE PRODUCT WITH WHICH THE LICENSED SOFTWARE IS ASSOCIATED, WHETHER BASED ON CONTRACT, TORT, NEGLIGENCE, STRICT LIABILITY OR OTHERWISE, EVEN IF TRANSCEND HAS BEEN ADVISED OF THE POSSIBILITY OF SUCH DAMAGES.

**8. Limitation of Liability.** IN ANY CASE, TRANSCEND 'S LIABILITY ARISING OUT OF OR IN CONNECTION WITH THIS AGREEMENT WILL BE LIMITED TO THE TOTAL AMOUNT ACTUALLY AND ORIGINALLY PAID AT RETAIL BY CUSTOMER FOR THE PRODUCT. The foregoing Disclaimer and Limitation of Liability will apply to the maximum extent permitted by applicable law. Some jurisdictions do not allow the exclusion or limitation of incidental or consequential damages, so the exclusions and limitations set forth above may not apply.

**9. Termination.** Transcend may, in addition to any other remedies available to Transcend, terminate this Agreement immediately if Customer breaches any of its obligations under this Agreement.

**10. Miscellaneous.** (a) This Agreement constitutes the entire agreement between Transcend and Customer concerning the subject matter hereof, and it may only be modified by a written amendment signed by an authorized executive of Transcend. (b) Except to the extent applicable law, if any, provides otherwise, this Agreement will be governed by the law of the Republic of China, excluding its conflict of law provisions. (c) If any part of this Agreement is held invalid or unenforceable, and the remaining portions will remain in full force and effect. (d) A waiver by either party of any term or condition of this Agreement or any breach thereof, in any one instance, will not waive such term or condition or any subsequent breach thereof. (e) Transcend may assign its rights under this Agreement without condition. (f) This Agreement will be binding upon and will inure to the benefit of the parties, their successors and permitted assigns.

## **18. 美國聯邦通信委員會 (FCC)聲明**

This device complies with Part 15 FCC Rules. Operation is subject to the following two conditions: (1) This device may not cause harmful interference. (2) This device must accept any interference received including interference that may cause undesired operation.

This Equipment has been tested and found to comply with the limits for a Class B digital device, pursuant to Part 15 of the FCC rules. These limits are designed to provide reasonable protection against harmful interference in a residential installation. This equipment generates, uses and can radiate radio frequency energy and, if not installed and used in accordance with the instructions, may cause harmful interference to radio communications. However, there is no guarantee that interference will not occur in a particular installation. If this equipment does cause harmful interference to radio or television reception, which can be determined by turning the equipment off and on, the user is encouraged to try to correct the interference by one or more of the following measures:

- Reorient or relocate the receiving antenna.
- Increase the separation between the equipment and receiver.
- Connect the equipment into an outlet on a circuit different from that to which the receiver is connected.
- Consult the dealer or an experienced radio/TV technician for help.

### **RF Exposure Information (SAR)**

This device meets the government's requirements for exposure to radio waves. This device is designed and manufactured not to exceed the emission limits for exposure to radio frequency (RF) energy set by the Federal Communications Commission of the U.S. Government.

The exposure standard for wireless devices employing a unit of measurement is known as the Specific Absorption Rate, or SAR. The SAR limit set by the FCC is 1.6W/kg.

The FCC has granted an Equipment Authorization for this device with all reported SAR levels evaluated as in compliance with the FCC RF exposure guidelines. SAR information on this device is on file with the FCC and can be found under the Display Grant section of [www.fcc.gov/oet/ea/fccid](http://www.fcc.gov/oet/ea/fccid) after searching on FCC ID: A4Z-DPB20.